

<-70C EPS Dry Ice Shipping Solutions:

Shipping:



Part Number	ID (in.)	Wall (in.)	Dry Ice used (lbs)	Duration (hrs)	Payload Capacity (L)
LF27026	8x6x7	1.5	9.5	62.6	<1
LF27163	12x10x9	1.5	30	59	3.1
LF27086	12x12x12	1.5	30	51.2	9.7
LF27136	17x12.5x10	1.5	32	53.7	14.7

*sustainable alternatives to EPS available

Temporary Vaccine Storage:

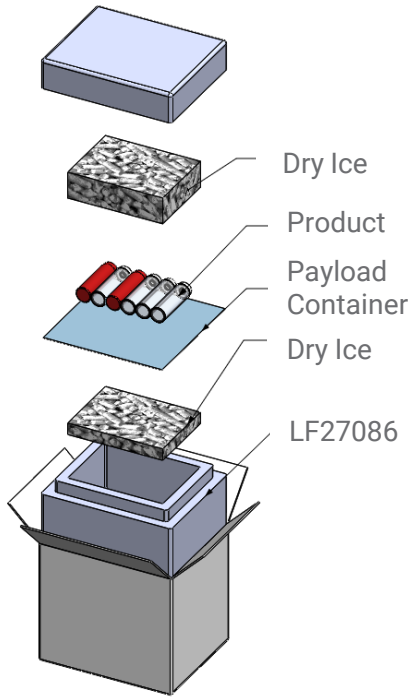


Envirocooler™ X-90

- ePUR material
- 2.25" wall
- ID: 12"x10"x13"
- 30% lighter than conventional PUR
- Hold time of 120 hours without dry ice replenishment



LF27026



OD (in): 11.563 x 9.563 x 7.88



Total Weight: 11 lbs



1.5" Wall



<1L Payload

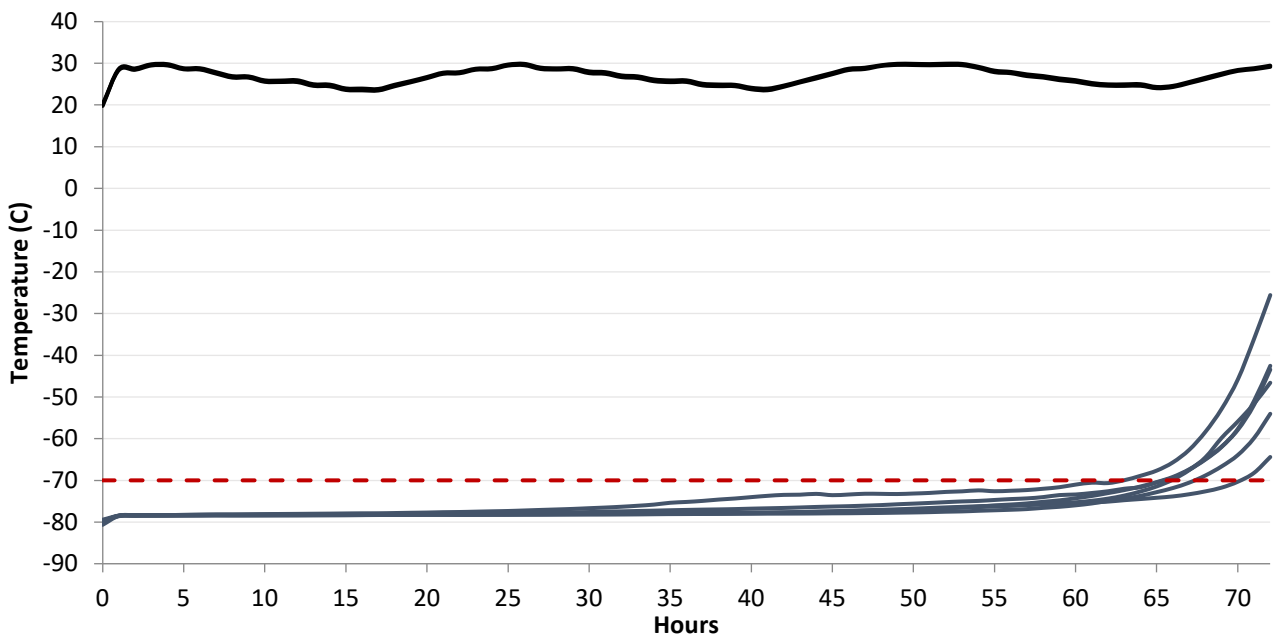


63 hour duration



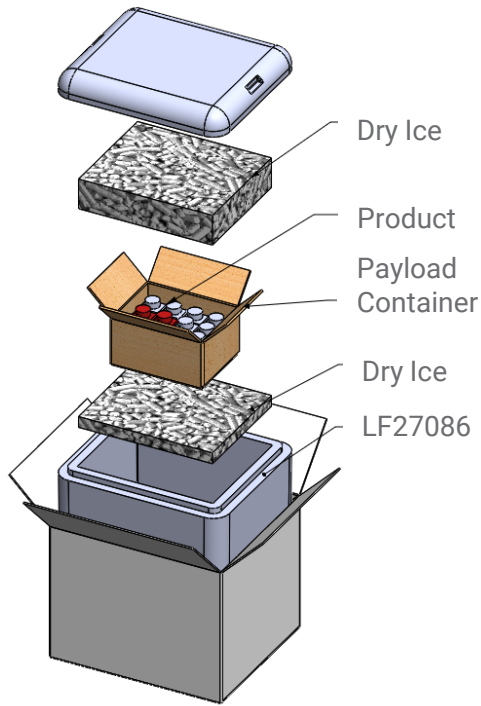
Sustainable Options Available

Performance – ISTA 7E:





LF27163



OD (in): 15.63 x 13.63 x 12.63



Total Weight: 28.9 lbs



1.5" Wall



3.1L Payload

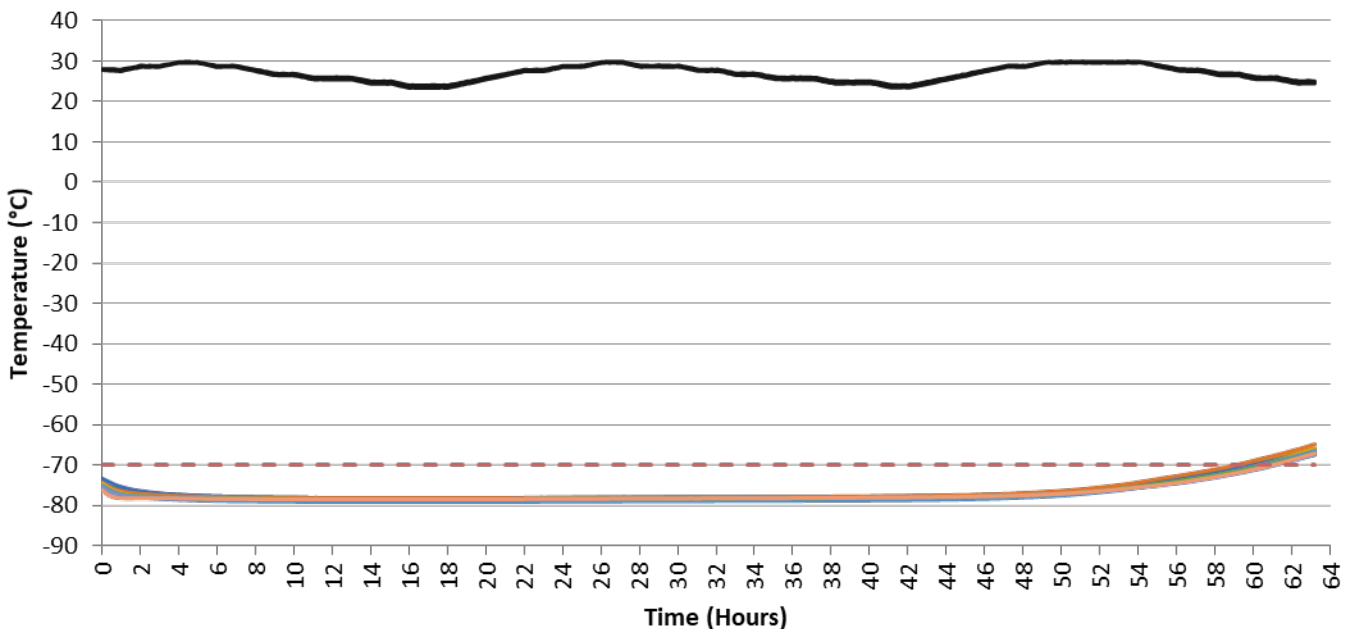


59 hour duration

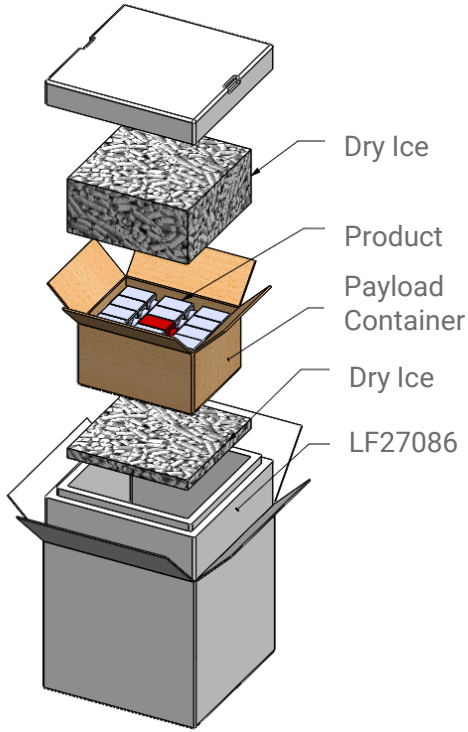


Sustainable Options Available

Performance – ISTA 7E:



LF27086



OD (in): 15.88 x 15.88 x 15.88



Total Weight: 41.8 lbs



1.5" Wall



9.7L Payload

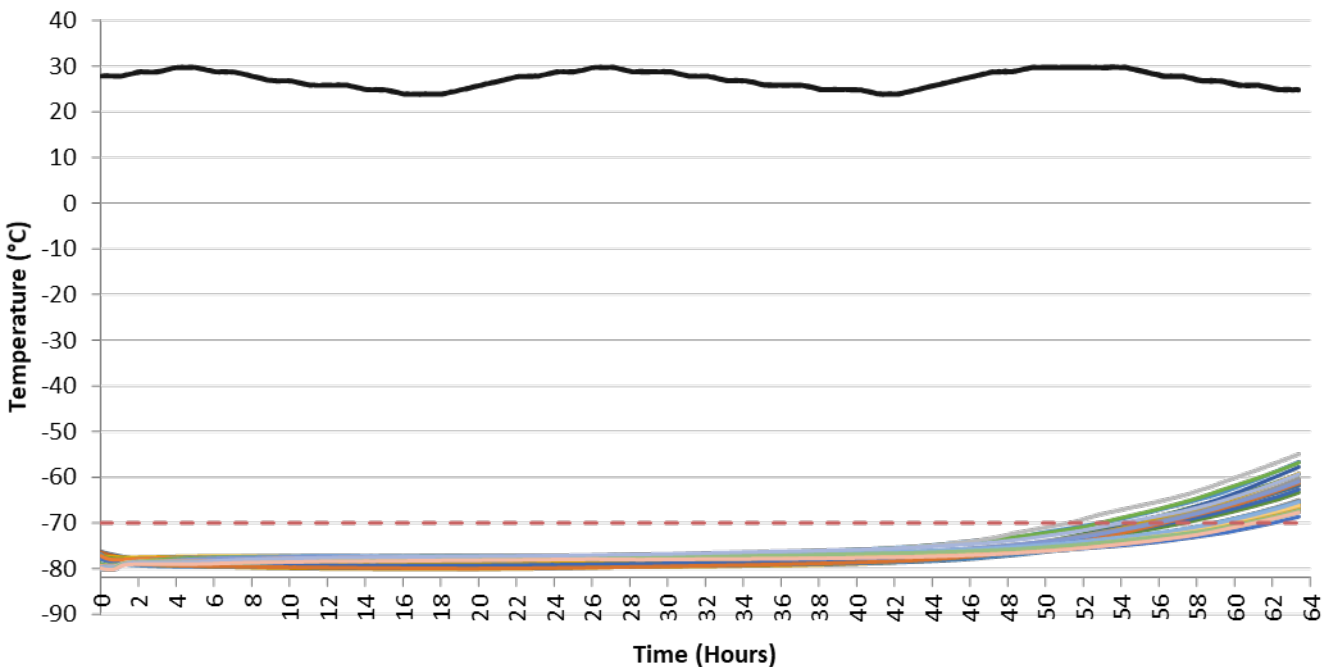


51 hour duration



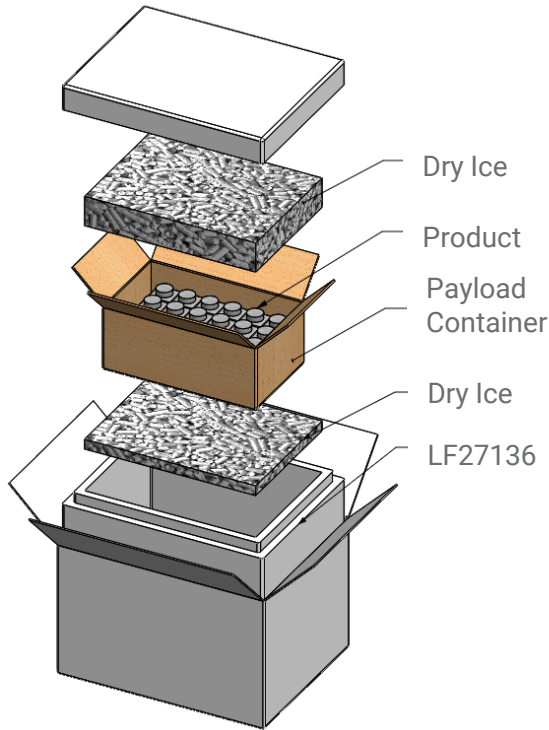
Sustainable Options Available

Performance – ISTA 7E:





LF27136



OD (in): 20.63 x 16.13 x 13.63



Total Weight: 46.2 lbs



1.5" Wall



15.7L Payload

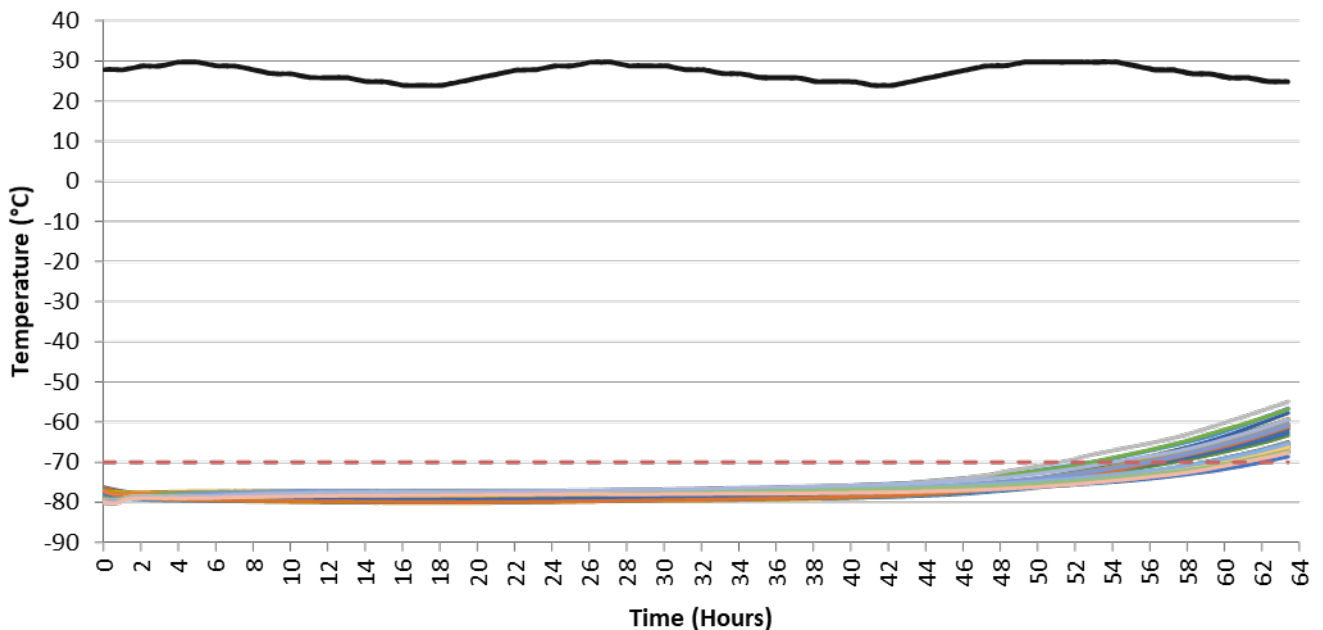


54 hour duration



Sustainable Options Available

Performance – ISTA 7E:



Validated Vaccine Shippers and Storage

If any of these problems sound like something you've been experiencing during COVID-19 with your Cold Chain shipping, join others in the industry in reaching out to us for help



Certified, validated solutions that perform, without being overbuilt



Sustainability in packaging



Availability of cold chain packaging materials and solutions



Portable, point of use, active storage



Robust, nationwide supply chain

Lifoam has been producing thermally controlled packaging for the healthcare, commercial, and retail industries for 50+ years through its Lifoam, Propak, and Envirocooler brands.

With 7 manufacturing facilities throughout the US, 3 global partner sites, 2 ISTA-certified labs, and a full line of technologies, Lifoam is committed to protecting what's important to you.